

doi 10.18699/vjgb-26-25

## Selecting stable rice mutants with linear mixed models (LMM) and stability indexes

P. Sharifi <sup>1</sup>, A.A. Ebadi<sup>2</sup>, M.T. Hallajian<sup>3</sup>, H. Aminpanah<sup>1</sup><sup>1</sup> Department of Agronomy, Ra. C., Islamic Azad University, Rasht, Iran<sup>2</sup> Rice Research Institute of Iran, Agricultural Research, Education and Extension Organization (AREEO), Rasht, Iran<sup>3</sup> Nuclear Science and Technology Research Institute of Iran, Tehran, Iran peyman.sharifi@iau.ac.ir

**Abstract.** Mutation serves as a pivotal source of diversity in plant breeding. This study focused on identifying stable rice mutant lines. Fourteen rice mutant lines, along with four conventional cultivars, were evaluated in a randomized complete block design with three replicates across three Iranian locations (Rasht, ChaparSar, and Fars province) during two growing seasons (2015, 2016). All statistical analyses were performed using the 'metan' (multi-environment trial analysis) R package. Single-environment ANOVA indicated significant genotypic effects for all traits. Likelihood ratio tests (LRTs) confirmed significant environment and genotype-by-environment interaction (GEI) effects for all traits. The first three principal components (PCs) captured 68.13, 14.46, and 9.76 % of the GEI variation, respectively. Heatmap visualization of yield performance and WAASB (weighted average of absolute scores based on best linear unbiased prediction, BLUP) highlighted genotypes G3, G9, G6, G12, and G5 as both high-yielding and stable. Multi-trait stability index (MTSI) analysis, designed to reveal genotypic strengths and weaknesses, selected only genotypes G7, G5, and G1. The top five genotypes based on the harmonic mean of the relative performance of genotypic values (HMRPGV) were G5, G12, G7, G2, and G1. The superior performance of certain mutants demonstrates that mutation has effectively generated significant genetic diversity. Notably, genotypes G12, G5, and G9 exhibited a clear advantage over the other genotypes and warrant consideration for selection or cultivar release; however, only G5 was selected based on all traits in the MTSI index and could therefore undergo selection or cultivar introduction processes.


**Key words:** genotype-by-environment interaction; MTSI; mutation breeding; simultaneous selection index; WAASB

**For citation:** Sharifi P, Ebadi A.A., Hallajian M.T., Aminpanah H. Selecting stable rice mutants with linear mixed models (LMM) and stability indexes. *Vavilovskii Zhurnal Genetiki i Seleksii*=*Vavilov J Genet Breed.* 2026;30(2):222-232. doi 10.18699/vjgb-26-25

**Funding.** The project was supported by the Iranian Rice Research Institute 03-04-0455-9411.

**Authors' contribution.** MTH treated parental seeds with gamma rays. AAE planned the research, carried the lead role in managing the research and collecting the data. PS analyzed the data and wrote the manuscript with contribution from all the authors.

## Отбор стабильных мутантов риса с помощью линейных моделей со смешанными эффектами (LMM) и индексов стабильности

П. Шарифи <sup>1</sup>, А.А. Эбади<sup>2</sup>, М.Т. Халладжян<sup>3</sup>, Х. Аминпанах<sup>1</sup><sup>1</sup> Департамент агрономии, Исламский университет Азад, Решт, Иран<sup>2</sup> Иранский исследовательский институт риса, Организация по сельскохозяйственным исследованиям, образованию и распространению знаний (AREEO), Решт, Иран<sup>3</sup> Научно-исследовательский институт ядерных наук и технологий Ирана, Тегеран, Иран peyman.sharifi@iau.ac.ir

**Аннотация.** Мутационные изменения служат основным источником разнообразия в селекции растений. Данное исследование было сосредоточено на выявлении стабильных мутантных линий риса. Четырнадцать мутантных линий и четыре обычных сорта риса были оценены в рандомизированном посеве с тремя повторениями в трех регионах Ирана (Решт, Чапарсар и провинция Фарс) в течение двух вегетационных сезонов 2015 и 2016 гг. Все статистические анализы выполнены с использованием пакета R 'metan' (multi-environment trial analysis). Однофакторный ANOVA показал значимые генотипические эффекты для всех признаков. Тесты отношения правдоподобия (LRT) подтвердили значимые эффекты среды и взаимодействия генотип-среда (GEI) для всех признаков. Первые три главные компоненты определяли 68.13, 14.46 и 9.76 % вариаций GEI соответственно. Визуализация тепловой карты для выраженности урожайности и WAASB (взвешенное среднее абсолютных баллов на основе наилучшего линейного несмещенного прогноза, BLUP) позволила выделить генотипы G3, G9, G6, G12 и G5 как высокоурожайные и стабильные. Анализ с помощью индекса мультипризнаковой стабильности

(MTSI), разработанный для выявления сильных и слабых сторон генотипов, отобрал только генотипы G7, G5 и G1. С использованием параметра гармонического среднего относительной производительности генотипических значений (HMRPGV) были отмечены пять лучших генотипов – G5, G12, G7, G2 и G1. Высокая выраженность признаков у некоторых мутантов демонстрирует, что мутационные изменения могут эффективно создавать значительное генетическое разнообразие. В частности, генотипы G12, G5 и G9 имели явное преимущество перед другими генотипами и могут быть использованы для последующей селекции или для создания сорта. Однако только генотип G5 был отобран с учетом индекса MTSI на основе всех признаков и, следовательно, может быть использован в дальнейшем селекционном процессе или для создания сорта.

**Ключевые слова:** взаимодействие генотип–среда; MTSI; мутационная селекция; индекс одновременного отбора; WAASB

## Introduction

Rice stands as a critical cereal crop, serving as a primary food source for over half of the global population. It assumes a vital role in ensuring food and nutritional security, while concurrently contributing to poverty alleviation (Khush, 2005). Crop production is susceptible to abiotic stresses, including drought and salinity, necessitating the evaluation of genotypes across diverse environments. This approach facilitates the identification of adaptable genotypes suitable for broad or specific environmental conditions (Sharifi, 2020).

Mutation is a key source of generating variation in plant breeding programs, allowing for the development of novel traits or the improvement of existing ones. This process relies on alterations within the genetic structure, leading to new heritable traits that can spread within plant populations (Shu, 2012). Mutation breeding is often used to develop cultivars that are more tolerant to biotic and abiotic stresses, enhance quality, or alter other plant characteristics (Ebadi et al., 2019). This strategy is a useful complement to existing germplasm and can help in the development of new cultivars. As plant phenotypes are affected by genotype-by-environment interaction (GEI), stability analysis is essential to understand the performance of genotypes across different environments and guide breeders in selecting superior genotypes (Sharifi et al., 2017). Consequently, yield stability and adaptability analyses in multi-environment trials are a critical component of genotype evaluation programs before a new breeding line is released as a commercial variety (Kang, 1988). This demonstrates the plant's ability to maintain yield potential despite environmental fluctuations (Yan et al., 2000).

Stability analysis has become an important part of research and plant breeding. Various statistical models, including univariate and multivariate methods, are used to assess the stability and adaptability of genotypes. The simultaneous selection index named as grain yield in a single non-parametric index (GSI), which is based on the sum of ranks for yield stability and performance, is often used as a criterion for stability analysis (Farshadfar, 2008). Yan (2016) noted that mean performance and stability are not always equally important when evaluating genotypes. Stability is more of a concern when genotypes are tested in only a few environments. However, when genotypes are adequately tested, information about their stability may already be reflected in their mean performance, because highly unstable genotypes – those that perform very well in some environments but poorly in others – will not be among the top performers across all environments. Newer indices for evaluating stability based on linear mixed mo-

odels (LMMs) include WAASB (weighted average of absolute scores based on best linear unbiased prediction (BLUP)) and WAASBY (WAASB stability index and yield performance, for simultaneous selection based on yield performance and stability) (Olivoto et al., 2019b). This approach combines additive main effects and multiplicative interaction models (AMMI), graphical tools with the predictive precision of BLUP (Olivoto et al., 2019b). The relative importance of mean performance and stability can vary when making selection decisions, which can change how genotypes are ranked (Yan, 2016). This explains why many breeders and variety evaluation organizations base their decisions only on mean performance, yet still achieve significant breeding progress (Yan, 2016). Given the importance of the WAASBY index, it can be used for all stability indices instead of the GSI (Farshadfar, 2008), allowing for the identification of the most superior genotypes.

In addition to high yield, which remains the primary breeding objective, a cultivar must meet minimum requirements for every trait that is significant to growers, processors, and end-users (Yan, 2021). Consequently, when data on multiple traits are available, the multi-trait stability index (MTSI) has several valuable applications for the simultaneous selection of mean performance and stability. Indeed, the greatest challenge in plant breeding is to combine all desirable traits within a single genotype, as key breeding objectives are often negatively correlated due to genetic linkage or pleiotropy (Yan, 2021). These indices are used in the stability analysis of rice (Sharifi et al., 2021), lentil (Karimizadeh et al., 2020), forage (Santos, Marza, 2020), barley (Ahakpaz et al., 2021), and wheat (Verma, Singh, 2020). An alternative analysis for stability studies based on mixed models is the harmonic mean of genotypic values and of the relative performance of genotypic values (HMRPGV), which provides information on stability, adaptability, and yield performance of genotypes in the same unit and scale as the evaluated trait (Resende, 2007). Selecting genotypes with the highest values of the harmonic mean of genotypic values (HMGV), relative performance of genotypic values (RPGV), and HMRPGV allows for simultaneous selection for yield performance and stability. This approach is used to evaluate grain yield stability in rice (Colombari-Filho et al., 2013), wheat (Coan et al., 2018; Verma, Singh, 2020), and corn (Rodvalho et al., 2015).

Several studies have assessed GEI in rice mutant lines. Dushyanthakumar and Shadadashari (2007) found significant effects of genotypes, environment, and their interactions when evaluating the yield stability of 15 rice mutants across nine environments. They used regression coefficients and

deviations from regression to identify stable mutants. Dewi and Dwimahyani (2019) evaluated 12 mutant rice genotypes at 16 locations and estimated yield stability using regression lines. Rahayu (2020) used AMMI analysis to differentiate stable mutant rice lines from 25 genotypes. Relatively few studies have used linear mixed models for rice stability analysis. Donoso-Nanculao et al. (2015) analyzed 10 rice genotypes using BLUP and identified superior genotypes. Balestre et al. (2010) also used BLUP to analyze the stability of rice genotypes and found that phenotypic means had lower predictive potential compared to BLUP.

The objectives of this study were to (1) evaluate GEI in rice genotypes across diverse environments in Iran, and (2) identify stable and high-yielding mutant lines.

## Materials and methods

### Plant material and experimental design

Fourteen rice mutant lines, along with their parental cultivars (Hashemi, Tarom, and Khazar) and the Gilaneh variety as a control (Table 1), were evaluated in a randomized complete block design (RCBD) with three replications. The experiment was conducted across three geographically distinct research stations in Iran: Rasht, ChaparSar, and Fars province. Data were collected over two years (2015, 2016). In both years, sowing took place in April, and transplanting was carried out in May at the 4–5 leaf stage. Harvesting occurred in August in both years as well.

The rice mutant lines originated from seeds of the parental cultivars subjected to 300 Gray of gamma irradiation from a Cobalt-60 source. Irradiation was performed at the Iranian Agricultural Atomic Research Institute in Tehran in 2009, with

seed moisture content maintained at eight percent. Following irradiation, the M1 generation was grown in the field. Surviving plants were self-pollinated, and seeds from the M2 generation were collected. This self-pollination process was repeated through the M5 generation to achieve homozygosity.

Prior to sowing, seeds of all experimental genotypes (mutant lines and cultivars) were surface-sterilized with a 20 % sodium hypochlorite solution for 10 minutes, followed by rinsing with sterile distilled water. This procedure was carried out in May of each year. Seeds were then placed in Petri dishes containing moistened filter paper to initiate germination. Germination occurred in a controlled environment at 35 °C and 70 % humidity. Seedlings were subsequently transplanted into 120 cm×60 cm boxes within greenhouses, ensuring suitable conditions for transplant production.

Twenty-five-day-old seedlings (approximately 30 cm tall) were transplanted to the main field at a planting density of 25 plants per square meter. Each plot measured two square meters. Data were collected from ten randomly selected plants within each plot. The following traits were measured: plant height, tiller number, panicle length, number of filled grains per panicle, number of unfilled grains per panicle, fertility percentage, and hundred-grain weight. Grain yield was determined on a per-square-meter basis.

### Statistical analysis

To assess genotypic stability and adaptability, the harmonic mean of genotypic values (HMGV) and the relative performance of genotypic values (RPGV) were calculated. The harmonic mean of the relative performance of genotypic values (HMRPGV) was employed for the simultaneous evaluation of stability, adaptability, and yield. These indices were computed using the following formulas (Resende, 2007):

$$HMGV_i = \frac{E}{\sum_{j=1}^E \frac{1}{GV_{ij}}}, \quad (1)$$

$$RPGV_i = \frac{1}{E} \sum_{j=1}^E \frac{GV_{ij}}{\mu_j}, \quad (2)$$

$$HMRPGV_i = \frac{E}{\sum_{j=1}^E \frac{1}{GV_{ij}/\mu_j}}, \quad (3)$$

where  $\mu_j$  represents the general mean for the  $j$ -th environment;  $E$  denotes the number of environments; and  $GV_{ij}$ :  $u_j + g_i + ge_{ij}$  indicate the genotypic value of the  $i$ -th genotype in the  $j$ -th environment. Here,  $u_j$  is the mean of the  $j$ -th environment, while  $g_i$  and  $ge_{ij}$  are the BLUP values of the  $i$ -th genotype and the interaction between the  $i$ -th genotype and  $j$ -th environment, respectively.

The weighted average of absolute scores from the singular value decomposition (SVD) of BLUP-estimated interaction effects ( $WAASB_i$ ) was computed using equation (4) (Olivoto et al., 2019a):

$$WAASB_i = \frac{\sum_{k=1}^p |IPCA_{ik} \times EP_k|}{\sum_{k=1}^p EP_k}, \quad (4)$$

where  $IPCA_{ik}$  is the score of the  $i$ -th genotype (or environment) in the  $k$ -th IPCA, and  $EP_k$  is the value of the explained variance by the  $k$ -th IPCA. The  $k$ -th IPCA is the  $k$ -th interaction principal

**Table 1.** The origin/pedigree of rice genotypes used in this experiment

Genotype code	Genotype	Pedigree
G1	TM6-230-VE-7-5-1	Parent: Tarom
G2	TM6-230-VE-8-4-1	
G3	TM6-250-10-7-1	
G4	TM6-B-2-1-E	
G5	TM6-B-7-1	
G6	TM6-B-19-2	
G7	HM5-250-E-1-1	Parent: Hashemi
G8	HM5-250-E-3-2	
G9	HM5-250-6-6	
G10	HM5-250-7-6	
G11	HM5-300-12-1	
G12	HM5-300-3-1	
G13	HM5-300-5-1	
G14	KM5-200-4-2-E	Parent: Khazar
G15	Khazar	IR36/TNAU4756
G16	Hashemi	Iranian landrace
G17	Tarom	Iranian landrace
G18	Gilaneh	Saleh×Abjibuji

**Table 2.** Evaluation of significance of factors for random effects (E and GEI) by LRT ( $\chi^2$ ) and for fixed effect (G) by ANOVA and estimation of variance components by REML

SOV	Plant height, cm	Tiller number	Panicle length, cm	Number of filled grains per panicle	Number of unfilled grains per panicle	Fertility percentage	Hundred-grain weight, g	Grain yield, kg·ha <sup>-1</sup>
Mean Square								
Genotype	102.7**	9.39**	8.64**	59.31**	40.13**	19.76**	0.049**	224817**
LRT ( $\chi^2$ )								
Environment	109.5**	39.63**	81.07**	102.1**	0.0000014 <sup>ns</sup>	2.11 <sup>ns</sup>	95.98**	71.75**
Gen:Env	384.3**	240.9**	184.9**	540.8**	931.3**	0.089**	379.2**	577.6**
Variance components								
REML Estimates (%)								
$\sigma_E^2$	592.1 (94.11)	5.19 (45.64)	9.96 (80.42)	421.9 (79.57)	0.00000016 (0.00000017)	3.62 (6.57)	0.047 (75.73)	306144 (52.25)
$\sigma_{E/R}^2$	0.40 (0.06)	0.19 (1.73)	0.012 (0.09)	0.14 (0.03)	0.00000021 (0.00000023)	0 (0)	0 (0)	1181 (0.20)
$\sigma_i^2$	30.14 (4.79)	4.23 (37.20)	1.52 (12.30)	96.48 (18.20)	87.66 (96.76)	49.66 (90.17)	0.012 (19.75)	252401 (43.08)
$\sigma_e^2$	6.49 (1.03)	1.75 (15.43)	0.88 (7.18)	11.68 (2.20)	2.93 (3.23)	1.79 (3.26)	0.0028 (4.51)	26182 (4.46)
$\sigma_p^2$	629.2	11.38	12.39	530.2	90.60	55.07	0.063	585907

Note. The numbers in parentheses indicate the percentage of variance accounted for by the phenotypic variance. LRT, likelihood ratio test.  $\sigma_E^2$ , environmental variance;  $\sigma_{E/R}^2$ , Block-within-Environment variance (or Environment/Replication variance);  $\sigma_i^2$ , Genotype × Environment interaction variance;  $\sigma_e^2$ , residual variance;  $\sigma_p^2$ , phenotypic variance. ns, non-significant, \*, \*\*, significant at 5 % and 1 % probability levels, respectively.

component axis (IPCA) in AMMI, used to compute WAASB. The genotype with the lowest WAASB value is considered the most stable (Olivoto et al., 2019a).

The WAASBY index, which allows simultaneous selection based on grain yield and stability, was derived using the following formula (Olivoto et al., 2019a):

$$WAASBY_i = \frac{(rG_i \times \theta_Y) + (rW_i \times \theta_S)}{\theta_Y + \theta_S} \quad (5)$$

Where WAASBY<sub>i</sub> is the superiority index for the *i*-th genotype, and  $\theta_Y$  and  $\theta_S$  are the weights for seed yield and stability (WAASB), respectively. The rescaled values (0–100) for the response variable ( $rG_i$ ) and WAASB ( $rW_i$ ) were calculated as follows:

$$rG_i = \frac{100 - 0}{G_{\max} - G_{\min}} \times (G_i - G_{\max}) + 100, \quad (6)$$

$$rW_i = \frac{0 - 100}{W_{\max} - W_{\min}} \times (W_i - W_{\max}) + 0. \quad (7)$$

The multi-trait stability index (MTSI) for the *i*-th genotype was calculated as follows (Olivoto et al., 2019b):

$$MTSI_i = \left[ \sum_{j=1}^f (F_{ij} - F_j)^2 \right]^{0.5} \quad (8)$$

Where,  $F_{ij}$  is the *j*-th score of the *i*-th genotype, and the ideotype ( $F_j$ ) is an ideal reference genotype with the most desirable values for each trait, *f* represents the number of traits (variables) included in the analysis. The ideotype has the highest WAASBY (100) for all analyzed variables (Olivoto et al., 2019b). The genotype with the lowest MTSI is then closer to the ideotype and therefore presents a high mean performance and stability (MPE) for all analyzed variables.

Selection differential (SD), selection gain (SG), and percentage of selection differential (% SD) represent the difference

between the mean of selected genotypes ( $\bar{X}$ ) and the entire population, the expected genetic progress, and the relative selection intensity, respectively.

$$SD = \bar{X}_S - \bar{X}_0, \quad (9)$$

$$SG = h^2 \times SD, \quad (10)$$

$$\% SD = \frac{SD}{\bar{X}_0} \times 100. \quad (11)$$

$\bar{X}_S$ : mean of selected genotypes;  $\bar{X}_0$ : mean of the entire population;  $h^2$ : heritability of the trait.

The selection differential for mean performance and the WAASBY index was calculated for each trait considering a selection intensity of 15 %.

All statistical analyses were performed using the ‘metan’ (multi-environment trial analysis) R package (Olivoto, Lúcio, 2020). An example of statistical analysis using R can be seen in the Supplementary file<sup>1</sup>.

## Results

### Analysis of variance, estimation of variance components and predicted grain yield

Single-environment ANOVA indicated significant genotypic effects for plant height, tiller number, panicle length, number of filled grains per panicle, number of unfilled grains per panicle, fertility percentage, hundred-grain weight, and grain yield. Likelihood ratio tests (LRTs) confirmed significant environment and genotype-by-environment interaction (GEI) effects for all traits. Analysis of variance also indicated a significant effect of genotype on all traits (Table 2).

<sup>1</sup> Supplementary file is available at: <https://vavilovj-icg.ru/download/pict-2026-30/appx16.pdf>

### Principal component analysis and biplot interpretation

The first three principal components (PCs) captured 68.13, 14.46, and 9.76 % of the GEI variation, respectively (Fig. 1). A type III biplot (WAASB values vs grain yield, Fig. 2 and Fig. 3) was used to visualize genotypic stability.

Genotypes G14 and G15, along with environments E3 and E6, positioned in the first quadrant, exhibited below-average grain yield and high WAASB values, indicating instability and a substantial contribution to GEI. Conversely, genotypes G2, G7, and G8, and environments E1, E4, and E5, in the second quadrant, showed above-average grain yield but were also unstable with significant GEI contributions. Environments E3, E4, and E6 displayed the highest WAASB values, indicating greater discriminating ability. Genotypes G4, G6, G9–G11, G13, G16, and G17, located in the third quadrant, demonstrated low yield and high stability (low WAASB). The most desirable genotypes – G1, G3, G5, G12, and G18 – occupied the fourth quadrant, characterized by high yield and stability. Environment E2, also in this quadrant, showed high yield performance but low WAASB values, indicating poor genotypic discrimination ability (Fig. 2).

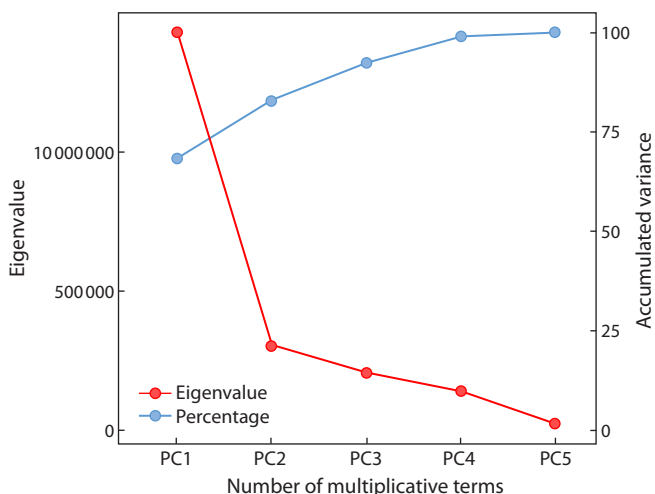
### Genotype ranking based on stability and performance weights

Figure 3 illustrates genotype rankings based on varying weights assigned to WAASB (stability) and grain yield. Ranking of 18 rice genotypes was based on the WAASBY index, illustrating variations in genotype performance under different weighting schemes for stability (WAASB) versus grain yield (BLUPs). The weights ( $\theta$ ) range from 0 (prioritizing yield alone) to 1 (prioritizing stability alone), with  $\theta = 0.5$  representing equal emphasis on both traits. Ranking based solely on stability (WAASB weight = 1) identified genotypes G6, G9, G3, G10, G13, and G17 as most stable. Ranking based solely on yield (yield weight = 1) identified G1, G2, G5, G7, and G12 as the highest-yielding genotypes.

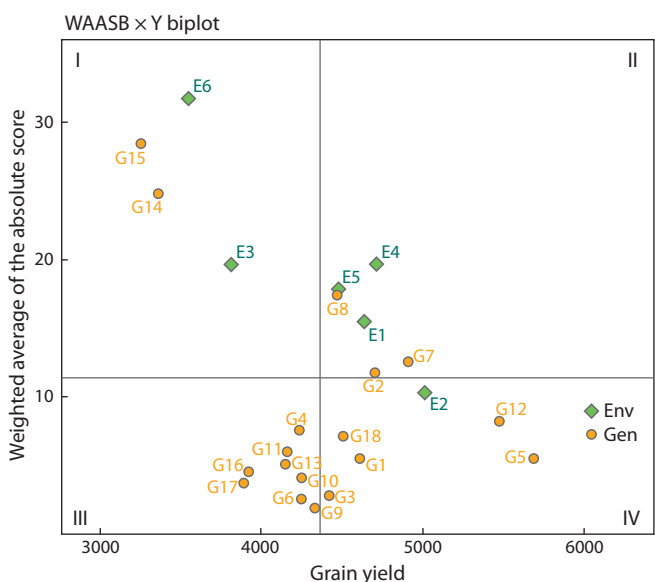
Hierarchical clustering revealed distinct genotype groupings based on stability and yield: (1) G4, G8, G14, and G15 were the least desirable; (2) G10, G11, G13, G16, and G17 were stable but low-yielding; (3) G1, G2, G7, and G18 were high-yielding but unstable; and (4) G3, G5, G6, G9, and G12 (particularly G5) were both high-yielding and stable.

### Factor analysis, multi-trait stability index (MTSI) and genotype selection

Factor analysis of the WAASBY index retained two principal components (eigenvalue > 1), explaining 71.5 % of the total variation (Table 3). Factorial loadings after varimax rotation and communalities obtained in the factor analysis are represented in Table 4. The eight traits were grouped into two factors: FA1 (agronomic and plant stature traits including plant height (PH), filled grains per panicle (FG), unfilled grains per panicle (UNFG), fertility percentage (FP), hundred-grain weight (HGW), grain yield (GY)), and FA2 (panicle-related traits contain tiller number (TN) and panicle length (PL)). While primarily associated with FA1, FG, UNFG, and GY also exhibited high scores on FA2 (Table 5).

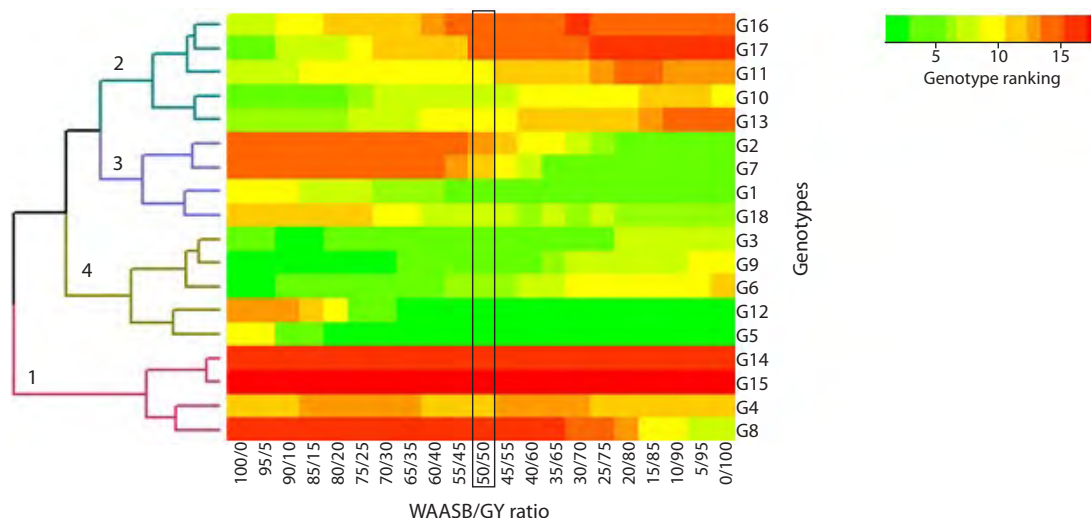


**Fig. 1.** Eigenvalues of the BLUP\_GEI matrix for grain yield of 18 rice genotypes across six environments.



**Fig. 2.** Biplot of grain yield vs WAASB of 18 rice genotypes evaluated over six environments (combinations of two cultivation years in three locations).

Ranking based on MTSI identified G7 (MTSI = 1.97), G5 (MTSI = 2.07), and G1 (MTSI = 2.24) as superior genotypes (Fig. 4, cutoff at MTSI = 2.24). The cutoff value (MTSI = 2.24) was determined following the methodology of Olivoto et al. (2019b), where the Multi-Trait Stability Index (MTSI) ranks genotypes based on their stability and multi-trait performance. This threshold represents the upper limit of the top-performing genotypes (G1, G5, G7), beyond which stability and performance decline significantly. The selection of this cutoff aligns with standard MTSI applications, where natural breaks in the index distribution or percentile-based thresholds are used to distinguish superior genotypes. The genotype with the lowest MTSI is then closer to the ideotype and therefore presents a high MPE for all analyzed variables (Olivoto et al., 2019b).



**Fig. 3.** Ranks of 18 rice genotypes with different weights for stability and grain yield.

**Table 3.** Eigenvalues and explained variance obtained in the factor analysis

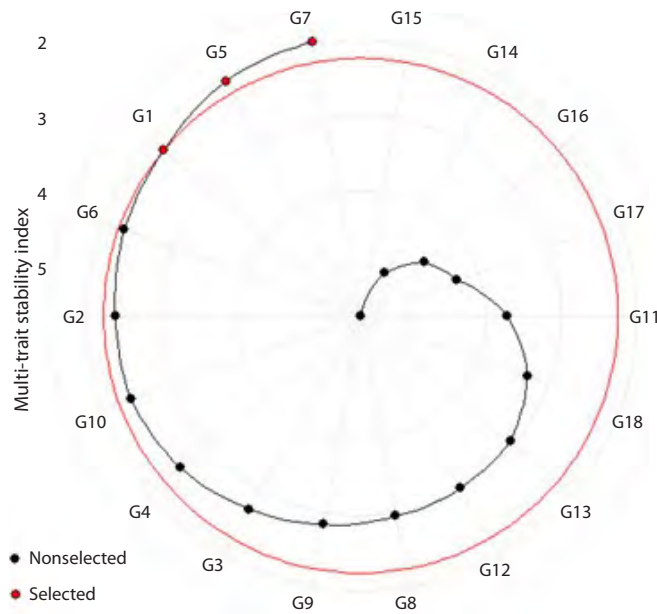
PC	Eigenvalues	Variance, %	Cum. variance, %
PC1	4.61	57.6	57.6
PC2	1.11	13.9	71.5
PC3	0.997	12.5	84.0
PC4	0.636	7.95	91.9
PC5	0.343	4.29	96.2
PC6	0.22	2.75	99.0
PC7	0.073	0.913	99.9
PC8	0.00898	0.112	100.0

**Table 4.** Factorial loadings after varimax rotation, and communalities obtained in the factor analysis

Traits	FA1	FA2	Communality	Uniquenesses
Plant height (PH)	-0.908	0.133	0.841	0.159
Tiller number (TN)	-0.152	-0.872	0.784	0.216
Panicle length (PL)	-0.0767	-0.670	0.455	0.545
Filled grains per panicle (FG)	-0.570	-0.330	0.434	0.566
Unfilled grains per panicle (UNFG)	-0.717	-0.623	0.902	0.0981
Fertility percentage (FP)	-0.713	-0.639	0.917	0.0829
Hundred-grain weight (HGW)	-0.728	-0.229	0.582	0.418
Grain yield (GY)	-0.653	-0.617	0.807	0.193

**Table 5.** The related traits and genotypes for each factor

Factor	Related traits to FA	Related genotypes to FA
FA1	PH, FG, UNFG, FP, HGW, GY	G18, G2, G4, G5, G6, G1, G10, G14, G15
FA2	TN, PL	G7, G8, G9, G11, G12, G13, G17, G3

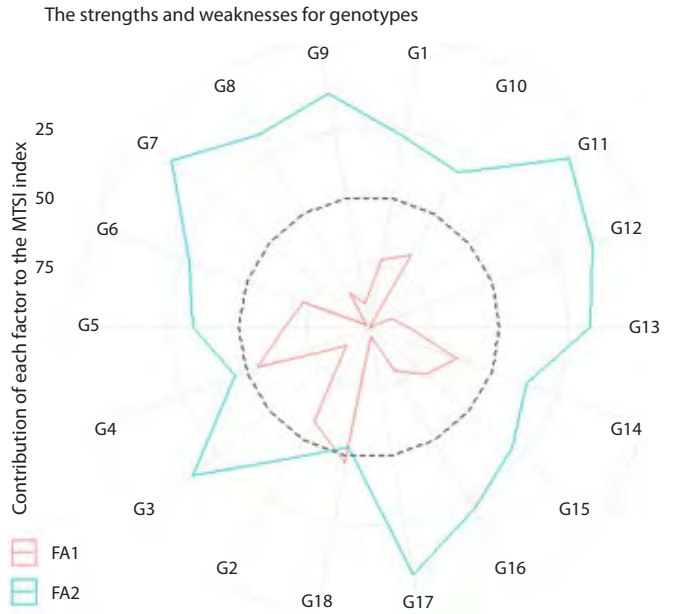


**Fig. 4.** Genotype ranking and genotypes selected for MTSI.

The MTSI resulted in positive selection differentials (SD) for WAASBY of all traits, ranging from 13 % (TN) to 49.5 % (HGW) (Table 6). Negative SDs for mean performance were observed for PH and UNFG, while positive SDs were noted for the remaining traits. This led to negative selection gains (SG) for PH (−0.35 %) and UNFG (−47.5 %), and positive SG for FG, FP, HGW, GY, TN, and PL (0.996 % ≤ SG ≤ 16.2 %). These results indicate that the selected genotypes exhibited improved genotypic stability compared to the original population, and indicate that MTSI is effective for genetic breeding.

**Visualization of strengths and weaknesses**

Figure 5 visualizes the strengths and weaknesses of each genotype. The contribution of each factor (FA1 and FA2) to the MTSI is ranked for each genotype, with the most contributing



**Fig. 5.** The strengths and weaknesses of genotypes are shown as the proportion of each factor on the computed multi-trait stability index (MTSI) of all genotypes.

The smaller the proportion explained by a factor (closer to the external edge), the closer the traits within that factor are to the ideotype. FA1: PH, FG, UNFG, FP, HGW and GY; and FA2: TN and PL.

factor near the plot center and the least contributing factor near the plot edge (Olivoto et al., 2019b). Genotypes associated with a specific factor demonstrate high mean performance and stability (low WAASB) for the traits primarily influenced by that factor. Ten genotypes (G1, G2, G4, G5, G6, G10, G14, G15, G16 and G18) showed strengths related to FA1 (Fig. 5), indicating desirable combinations of high mean performance and stability for FA1-related traits: reduced PH and UNFG, and increased FG, FP, HGW, and GY. Eight genotypes (G3, G7, G8, G9, G11, G12, G13, and G17) exhibited strengths related to FA2 (Fig. 5). For G5, the second-ranked genotype by MTSI, significant FA1 contribution confirms its favorable

**Table 6.** Selection gains for mean performance of 18 rice genotypes obtained in a multi-trait selection with the multi-trait stability index (MTSI)

Traits	Factor	Goal	Mean performance (BLUP)							WAASBY index			
			Xo	Xs	SD	% SD	SG	SG %	Xo	Xs	SD	% SD	
Plant height (PH)	FA1	Decrease	123	123.437	−0.437	−0.354	−0.409	−0.332	55.7	64.2	8.49	15.2	
Filled grains per panicle (FG)		Increase	91.7	94.2	2.49	2.72	2	2.18	44.4	53.9	9.56	21.6	
Unfilled grains per panicle (UNFG)		Decrease	13.5	7.1	−6.43	−47.5	−5.95	−43.9	83.3	95.8	12.5	14.9	
Fertility percentage (FP)		Increase	88	92.7	4.63	5.26	4.21	4.78	78.1	93.7	15.6	19.9	
Hundred-grain weight (HGW)				2.55	2.8	0.246	9.64	0.23	9.09	57.2	85.7	28.5	49.5
Grain yield (GY)				4360	5065	705	16.2	623	14.3	59.9	75.1	15.3	25.5
Tiller number (TN)	FA2	Increase	16.6	16.8	0.166	0.996	0.13	0.81	61.7	69.8	8.06	13	
Panicle length (PL)					25.8	26.2	0.469	1.82	0.42	1.63	51.7	61.6	9.86

Note. Xo: mean performance (BLUP) and WAASBY index of the original population; Xs: mean performance (BLUP) and WAASBY index of the selected genotypes; SD: selection differential; % SD: percentage of selection differential; SG: selection gain.

**Table 7.** Ranking of the genotypes in all environments evaluated for adaptability parameters of genotypic values for the grain yield of rice genotypes evaluated in six environments

GEN	Grain yield, kg · ha <sup>-1</sup>	HMGV <sup>†</sup>	HMGV_order	RPGV	RPGV* $\bar{\mu}$	RPGV_order	HMRPGV	HMRPGV* $\bar{\mu}$	HMRPGV_order
G1	4607	4537	5	1.058	4612	5	1.054	4597	5
G2	4699	4640	4	1.084	4727	4	1.073	4680	4
G3	4418	4333	8	1.012	4414	8	1.009	4401	8
G4	4227	4096	12	0.965	4207	12	0.959	4183	12
G5	5684	5652	1	1.313	5725	1	1.306	5696	1
G6	4237	4181	10	0.974	4247	10	0.972	4236	10
G7	4904	4884	3	1.138	4962	3	1.124	4901	3
G8	4466	4430	7	1.039	4531	6	1.017	4436	7
G9	4323	4276	9	0.994	4333	9	0.993	4330	9
G10	4240	4164	11	0.973	4241	11	0.969	4225	11
G11	4157	4023	14	0.948	4134	14	0.942	4105	14
G12	5470	5448	2	1.266	5519	2	1.257	5481	2
G13	4148	4061	13	0.950	4144	13	0.947	4130	13
G14	3353	2365	17	0.742	3236	17	0.589	2568	17
G15	3252	2288	18	0.716	3121	18	0.568	2477	18
G16	3908	3845	15	0.898	3917	15	0.894	3897	15
G17	3883	3832	16	0.892	3890	16	0.891	3882	16
G18	4504	4433	6	1.037	4521	7	1.028	4481	6

Note. <sup>†</sup> Performance genetic value (RPGV); RPGV\* $\bar{\mu}$ : stability of genotypic values (HMGV), adaptability and stability of genotypic values (HMRPGV); HMRPGV\* $\bar{\mu}$ : general mean of all environments; the parameters are expressed in kg · ha<sup>-1</sup>, except for RPGV and HMRPGV.

combination of reduced PH and UNFG, and increased FG, FP, HGW, and GY. This genotype exhibited lower plant height and unfilled grains per panicle, and higher tiller number, hundred-grain weight, and grain yield, compared to the overall average. Genotype G12 showed higher tiller number, fertility percentage, and grain yield, along with lower plant height and unfilled grains per panicle. While identified as superior by other indices, G12 did not rank highly using MTSI. This discrepancy is likely due to the low selection gain for traits in FA1, specifically hundred-grain weight.

### Genotypic stability and adaptability assessment using HMRPGV

Based on the Harmonic Mean of Relative Performance of Genotypic Values (HMRPGV), the top five genotypes for stability and adaptability, relative to check varieties, were G1, G2, G7, G12, and G5. The HMRPGV multiplied by the overall mean (HMRPGV\* $\bar{\mu}$ ) for these genotypes were 4597, 4680, 4901, 5481, and 5696 kg · ha<sup>-1</sup>, respectively (Table 7). Selecting these genotypes would result in a 16.35 % increase in grain yield compared to the overall mean (4360 kg · ha<sup>-1</sup>). This selection, based on stability, adaptability, and yield, highlights the positive response of these genotypes to improved environmental conditions and their consistent performance across diverse environments.

### Discussion

A broad genetic base is crucial for successful rice breeding programs, and induced mutation represents a valuable technique for expanding genetic diversity (Cheema, 2006). The significant effect of genotype observed across all environments, as indicated by simple analysis of variance, underscores the genetic diversity present within the experimental material. This result suggests that mutation has effectively contributed to a reasonable level of diversity within the genetic material under investigation. This finding aligns with the work of other researchers who have assessed the stability of rice mutant lines and demonstrated a significant impact of mutation in generating diversity with respect to grain yield and other important traits, particularly yield components (Dushyanthakumar, Shadadashari, 2007; Donoso-Nanculao et al., 2015; Dewi, Dwimahyani, 2019; Rahayu, 2020).

Experimental trials designed to evaluate yield performance, stability, and adaptability are essential for characterizing genetic materials such as mutant lines before they are released as new breeding lines or varieties (Shu, 2012). Conversely, the observed variation in genotype grain yield across different environments highlights the need to carefully determine the yield performance and stability of genotypes in a range of environmental conditions (Ebadi et al., 2019). Therefore, it is crucial to investigate the yield stability of rice mutant lines and

to identify those lines that exhibit both high yield potential and stable performance across diverse environmental conditions. The likelihood ratio test (LRT) conducted in this study revealed significant effects of both the environment and genotype-by-environment interaction (GEI). Similar results have been reported by other researchers conducting multi-environment trials with rice (Bose et al., 2011; Akter et al., 2015; Sharifi et al., 2017; Rahayu, 2020). Variations in environmental conditions from year to year and from location to location contribute to a pronounced GEI effect, which underscores the role of genetic factors in influencing genotype performance across different environmental conditions (Dia et al., 2016).

The restricted maximum likelihood (REML) analysis conducted in this study indicated that environmental variance contributed more significantly to the phenotypic variance observed for traits such as plant height, number of tillers, panicle length, number of filled grains per panicle, hundred-grain weight, and grain yield. In contrast, GEI had a greater contribution to the observed variance in the number of unfilled grains per panicle and fertility percentage. The first two principal components derived from the GEI analysis accounted for 68.13 and 14.46 % of the total genotype-by-environment interaction variation, respectively. In line with this finding, other researchers have acknowledged the substantial contribution of the first two principal components in explaining genotype-by-environment interaction effects on rice grain yield (Nayak et al., 2008; Akter et al., 2015; Allahgholipour, 2017; Rahayu, 2020).

Genotype-by-environment interaction reduces the predictability of genotype performance in target environments based on observations made in test environments (Yan et al., 2011). Numerous procedures and statistical methods have been developed to quantify genotype by environment interaction through the evaluation of genotypes across multiple environments. In addition to conventional multivariate methods like AMMI and GGE biplot analysis, the best linear unbiased predictor (BLUP) method has also been recommended for evaluating genotypes in different environments and for quantifying genotypic stability. Several researchers have employed the BLUP method to assess the stability of rice genotypes (Balestre et al., 2010; Donoso-Ñanculao et al., 2015). The use of restricted maximum likelihood (REML) for estimating variance components offers significant flexibility in analysis (Patterson, Thompson, 1971) and can effectively handle complex data structures (Searle et al., 1992).

The WAASBY index (Olivoto et al., 2019a) facilitates the weighting between mean performance and stability (MPE) in genotype evaluation. The primary advantage of this procedure is its integration of AMMI's graphical tools (Gauch, 2013) with the predictive accuracy of BLUP for stability analysis (Piepho, 1994; van Eeuwijk et al., 2016). Consequently, the WAASB approach, which proposes the SVD (singular value decomposition) of a two-way table with BLUPs for GEI interaction (instead of the residual of the additive model as in standard AMMI), allows for a graphical representation of a random GEI structure. The WAASB index accounts for more than one (stability based on IPCA1) or two (AMMI-stability value) interaction principal component axes. In the present research, the first three principal components accounted for

over 82 % of the GEI variation in grain yield, making the WAASB and WAASBY indices more effective in identifying superior genotypes. On the other hand, the variation of certain genotypes is explained by more IPCAs, making indices such as WAASB necessary, which is calculated using additional principal components. Consequently, we utilized this index and identified genotypes G1, G3, G5, G12, and G18 as superior (Fig. 2). The biplot based on this index was also employed to assess the discriminating ability of environments, revealing that the environments in the first two sections of biplot type III (Fig. 2), particularly E6, exhibited the highest WAASB value and strong genotype discrimination capability. However, the genotypes in these two quadrants with a significant contribution to the GEI were unstable. In the fourth quadrant of this biplot, genotypes G18, G1, G3, G5, and G12 emerged as the most desirable, demonstrating high yield stability and performance. The ranking of rice genotypes with varying weights for grain yield performance and stability in Figure 3 illustrated the diversity among rice mutant lines. In this heatmap, scenarios with different weights of yield stability and performance were simulated to display changes in genotype ranking. The grain yield of mutant lines G5, G12, G2, G7, and G1 surpassed that of parental varieties and Gilaneh, the control variety.

The HMRPGV method evaluates grain yield performance, stability, and adaptability simultaneously within a genotypic context (Resende, 2007). The HMRPGV of 1.306 for G5 indicated a 30.6 % increase in grain yield over the general mean. It appears that yield performance is prioritized over stability in the HMRPGV, and the selection of genotypes is based more on yield performance (as compared to Fig. 3) than on stability.

When data on several traits are available, the multi-trait stability index (MTSI) has many useful applications for simultaneous selection of mean performance and stability. This index is an MTSI-based on factor analysis, designed for simultaneous selection using both fixed and mixed effect models for multiple traits (Olivoto et al., 2019b). The factor-analytic variance-covariance structure accommodates different variances across environments and covariances between pairs of environments by approximating a completely unstructured covariance matrix through factor analysis. Therefore, it is reasonable to assume that the model will fit better than a standard mixed effect model. This factor analysis of WAASBY, which is the first step in computing the MTSI index, revealed that the eight traits were grouped into two factors. A Euclidean distance was then used to compute the distance between the genotypes' scores and the ideotype's score. This plot (Fig. 4) displays the genotype ranking in ascending order for the MTSI index. The selected genotypes using MTSI, including G7, G5, and G1, are shown in red, and the spiral depicts the cutpoint according to the selection pressure. A higher weight for mean performance was assigned to tiller number, panicle length, filled grains per panicle, fertility percentage, hundred grain weight, and grain yield. It is preferable to select highly productive genotypes that may not perform well in terms of broad stability and then consider the adaptability of these genotypes to specific environments to make better recommendations. The MTSI index enables simultaneous selection of genotypes based on performance and stability across all traits, making it a unique

index (Olivoto et al., 2019a). This index has been used for the selection of superior genotypes in *Solanum melongena* (Koundinya et al., 2019), *Brassica* spp. (Bocianowski et al., 2019), chickpea (Sellami et al., 2021), maize (Olivoto et al., 2021), and rice (Sharifi et al., 2021).

MTSI serves as an effective tool for identifying the strengths and weaknesses of genotypes and selecting those with desired mean performance and stability (Olivoto et al., 2021). This approach enabled the identification of genotypes that combine the desired mean performance and stability (MPE) for important traits such as grain yield (GY), hundred-grain weight (HGW), fertility percentage (FP), and tiller number (TN) (Fig. 5).

## Conclusion

The significant effect of genotype indicated that the mutation process has successfully created a reasonable level of diversity in the genetic material. The first three principal components accounted for 92.35 % of the GEI variation with respect to grain yield, and the WAASB index was used to evaluate the stability of the genotypes. Biplot type III analysis revealed that genotypes G18, G1, G3, G5, and G12 were both high-yielding and stable across the tested environments. The heatmap visualization of yield performance and WAASB stability scores indicated that genotypes G3, G9, G6, G12, and G5 were highly productive and stable. The MTSI (multi-trait stability index) identified genotypes G7, G5, and G1 as the selected genotypes based on the overall stability and performance across all measured traits. According to the HMRPGV index, G5, G12, G7, G2, and G1 were identified as the top-performing genotypes. In conclusion, two genotypes, G12 and G5, exhibited a significant advantage over all other genotypes; however, only G5 was selected based on all traits in the MTSI index and could therefore undergo selection or cultivar introduction processes.

## References

Ahakpaz F., Abdi H., Neyestani E., Hesami A., Mohammadi B., Nader Mahmoudi K., Abedi-Asl G., Jazayeri Noshabadih M.R., Ahakpaz F. Genotype-by-environment interaction analysis for grain yield of barley genotypes under dryland conditions and the role of monthly rainfall. *Agric Water Manage.* 2021;245. doi 10.1016/j.agwat.2020.106665

Akter A., Hasan M.J., Kulsum M.U., Rahman M.H., Paul A.K., Lipi L.F., Akter S. Genotype × environment interaction and yield stability analysis in hybrid rice (*Oryza sativa* L.) by AMMI biplot. *Bangladesh Rice J.* 2015;19(2):83-90. doi.org/10.3329/brj.v19i2.28168

Allahgholipour M. Analysis of grain yield stability of new rice (*Oryza sativa* L.) genotypes originated from Iranian local cultivars. *Iranian J Crop Sci.* 2017;18(4):288-301. (in Persian with English abstract).

Balestre M., dos Santos V.B., Soares A.A., Reis M.S. Stability and adaptability of upland rice genotypes. *Crop Breed Appl Biotech.* 2010;10:357-363. doi 10.1590/S1984-70332010000400011

Bocianowski J., Niemann J., Nowosad K. Genotype-by-environment interaction for seed quality traits in interspecific cross-derived *Brassica* lines using additive main effects and multiplicative interaction model. *Euphytica.* 2019;215(1):7. doi 10.1007/s10681-018-2328-7

Bose L.K., Jambhulkar N.N., Pande K., Singh O.N. Use of AMMI and other stability statistics in the simultaneous selection of rice genotypes for yield and stability under direct-seeded conditions. *Chil J Agric Res.* 2011;74(1):3-9. doi 10.4067/S0718-58392014000100001

Cheema A.A. Mutation breeding for rice improvement in Pakistan: achievements and impact. *Plant Mut Rep.* 2006;1(1):36-39. https://

www-pub.iaea.org/MTCD/publications/PDF/Newsletters/PMR-01-01.pdf

Coan M.M.D., Marchioro V.S., Franco F.A., Pinto R.J.B., Scapim C.A., Baldissera J.N.C. Determination of genotypic stability and adaptability in wheat genotypes using mixed statistical models. *J Agric Sci Tech.* 2018;20:1525-1540. https://jast.modares.ac.ir/article-23-20190-en.pdf

Colombari-Filho J.M., Resende M.D.V., de Moraes O.P., Castro A.P., Guimaraes E.L., Pereira J.M., Utumi M.M., Breseghello F. Upland rice breeding in Brazil: a simultaneous genotypic evaluation of stability, adaptability and grain yield. *Euphytica.* 2013;192:117-129. doi 10.1007/s10681-013-0922-2

Dewi A.K., Dwimahyani I. Grain yield stability analysis of Jembar local rice mutant lines generated from mutation breeding. *IOP Conf Ser Earth Environ Sci.* 2019;230:012112. doi 10.1088/1755-1315/230/1/012112

Dia M., Wehner T.C., Arellano C. Analysis of genotype × environment interaction (G×E) using SAS programming. *Agron J.* 2016;108:1838-1852. doi 10.2134/agronj2016.02.0085

Donoso-Nãnculao G., Paredes M., Becerra V., Arrepol C., Balzarini M. GGE biplot analysis of multi-environment yield trials of rice produced in a temperate climate. *Agric Res.* 2015;76(2):152-157. doi 10.4067/S0718-58392016000200003

Dushyanthakumar B.M., Shadadashari Y.G. Stability analysis of P.U. Belliyappa local rice mutants. *Karnataka J Agric Sci.* 2007;20(4):724-726. http://14.139.155.167/test5/index.php/kjas/article/viewFile/1032/1024

Ebadi A.A., Hallajian M.T., Kordrostami M. The genetic variation and stability analysis of rice mutant lines using AMMI model under normal and drought stress conditions. *Genetika.* 2019;51(2):687-699. doi 10.2298/GENSR1902687E

Farshadfar E. Incorporation of AMMI stability value and grain yield in a single non-parametric index (GSI) in bread wheat. *Pakistan J Biol Sci.* 2008;11(14):1791-1796. doi 10.3923/pjbs.2008.1791.1796

Gauch H.G. A simple protocol for AMMI analysis of yield trials. *Crop Sci.* 2013;53(5):1860-1869. doi 10.2135/cropsci2013.04.0241

Kang M.S. A rank-sum method for selecting high-yielding, stable corn genotypes. *Cereal Res Comm.* 1988;16:113-115

Karimizadeh R., Pezeshkpour P., Barzali M., Mehraban A., Sharifi P. Evaluation the mean performance and stability of lentil genotypes by combining features of AMMI and BLUP techniques. *J Crop Breed.* 2020;12(36):160-170. (In Persian with English abstract). doi 10.52547/jcb.12.36.160

Khush G.S. What it will take to feed 5.0 billion rice consumers in 2030. *Plant Mol Biol.* 2005;59:1-6. doi 10.1007/s11103-005-2159-5

Koundinya A.V.V., Pandit M.K., Ramesh D., Mishra P. Phenotypic stability of eggplant for yield and quality through AMMI, GGE and cluster analyses. *Sci Hort.* 2019;247:216-223. doi 10.1016/j.scienta.2018.12.019

Nayak D., Bose L.K., Singh S., Nayak P. Additive main effects and multiplicative interaction analysis of host-pathogen relationship in rice-bacterial blight pathosystems. *Plant Path J.* 2008;24(3):337-351

Olivoto T., Lúcio A.D. Metan: an R package for multi-environment trial analysis. *Meth Ecol Evol.* 2020;11:783-789. doi 10.1111/2041-210X.13384

Olivoto T., Lúcio A.D.C., da Silva J.A.G., Marchioro V.S., de Souza V.Q., Jost E. Mean performance and stability in multi-environment trials I: combining features of AMMI and BLUP techniques. *Agron J.* 2019a;111(6):2949-2960. doi 10.2134/agronj2019.03.0220

Olivoto T., Lúcio A.D.C., da Silva J.A.G., Sari B.G., Diel M.I. Mean performance and stability in multi-environment trials II: selection based on multiple traits. *Agron J.* 2019b;111(6):2961-2969. doi 10.2134/agronj2019.03.0221

Olivoto T., Nardino M., Meira D., Meier C., Follmann D.N., de Souza V.Q., Konflanz V.A., Baretta D. Multi-trait selection for mean per-

- formance and stability in maize. *Agron J.* 2021;113:3968-3974. doi 10.1002/agj2.20741
- Patterson H.D., Thompson R. Recovery of interblock information when block sizes are unequal. *Biometrics.* 1971;58:545-554. doi 10.2307/2334389
- Piepho H.P. Best linear unbiased prediction (BLUP) for regional yield trials: a comparison to additive main effects and multiplicative interaction (AMMI) analysis. *Theor Appl Genet.* 1994;89(5):647-654. doi 10.1007/BF00222462
- Rahayu S. Yield stability analysis of rice mutant lines using AMMI method. *J Phys Conf Ser.* 2020;1436:012019. doi 10.1088/1742-6596/1436/1/012019
- Resende M.D.V. Matemática e Estatística na Análise de Experimentos e no Melhoramento Genético. Embrapa Florestas, Colombo, Brazil, 2007
- Rodvalho M.A., Coan M.M.D., Scapim C.A., Pinto R.J.B., Contreras-Soto R.I. Comparison of HMRPGV, Lin and Binns's and Annichiarico's methods for maize hybrid selection for high and stable yield. *Maydica.* 2015;60(1):1-7
- Santos F., Marza F. Selection of forage oat genotypes through GGE Biplot and BLUP. *bioRxiv.* 2020. doi 10.1101/2020.03.10.986422
- Searle S.R., Casella G., McCulloch C.E. Variance Components. John Wiley and Sons, New York, USA, 1992
- Sellami M.H., Lavini A., Pulvento C. Phenotypic and quality traits of chickpea genotypes under rainfed conditions in South Italy. *Agronomy.* 2021;11:962. doi 10.3390/agronomy11050962
- Sharifi P. Evolution, domestication, breeding methods and the latest breeding findings in rice. Agric Natural Res Enginng Org of Iran. 2020. (in Persian)
- Sharifi P., Aminpanah H., Erfani R., Mohaddesi A., Abbasian A. Evaluation of genotype×environment interaction in rice based on AMMI model in Iran. *Rice Sci.* 2017;24(3):173-180. doi 10.1016/j.rsci.2017.02.001
- Sharifi P., Erfani A., Abbasian A., Mohaddesi A. Stability of some of rice genotypes based on WAASB and MTSI indices. *Iranian J Gen Plant Breed.* 2021;9(2):1-11. doi 10.30479/IJGPB.2021.14432.1283
- Shu Q.Y. Plant Mutation and Biotechnology. CABI, 2012
- van Eeuwijk F.A., Bustos-Korts D.V., Malosetti M. What should students in plant breeding know about the statistical aspects of genotype × environment interactions? *Crop Sci.* 2016;56(5):2119-2140. doi 10.2135/cropsci2015.06.0375
- Verma A., Singh G.P. Simultaneous application of AMMI measures and yield for stability analysis of wheat genotypes evaluated under irrigated late sown conditions of Central Zone of India. *J Appl Nat Sci.* 2020;12(4):541-549. doi 10.31018/jans.v12i4.2391
- Yan W. Analysis and handling of G × E in a practical breeding program. *Crop Sci.* 2016;56:2106-2118. doi 10.2135/cropsci2015.06.0336
- Yan W. A systematic narration of some key concepts and procedures in plant breeding. *Front Plant Sci.* 2021;12:724517. doi 10.3389/fpls.2021.724517
- Yan W., Hunt L.A., Shen Y., Szlavnics Z. Cultivar evaluation and mega-environment investigation based on the GGE biplot. *Crop Sci.* 2000;40:597-605 doi 10.2135/cropsci2000.403597x
- Yan W., Pageau D., Frégeau-Reid J., Durand J. Assessing the representativeness and repeatability of test locations for genotype evaluation. *Crop Sci.* 2011;51:1603-1610. doi 10.2135/cropsci2011.01.0016

**Data availability statement.** The data that support this study cannot be publicly shared due to ethical or privacy reasons and may be shared upon reasonable request to the corresponding author if appropriate.

**Conflict of interest.** The authors declare no conflict of interest.

Received March 11, 2025. Revised August 8, 2025. Accepted August 8, 2025.