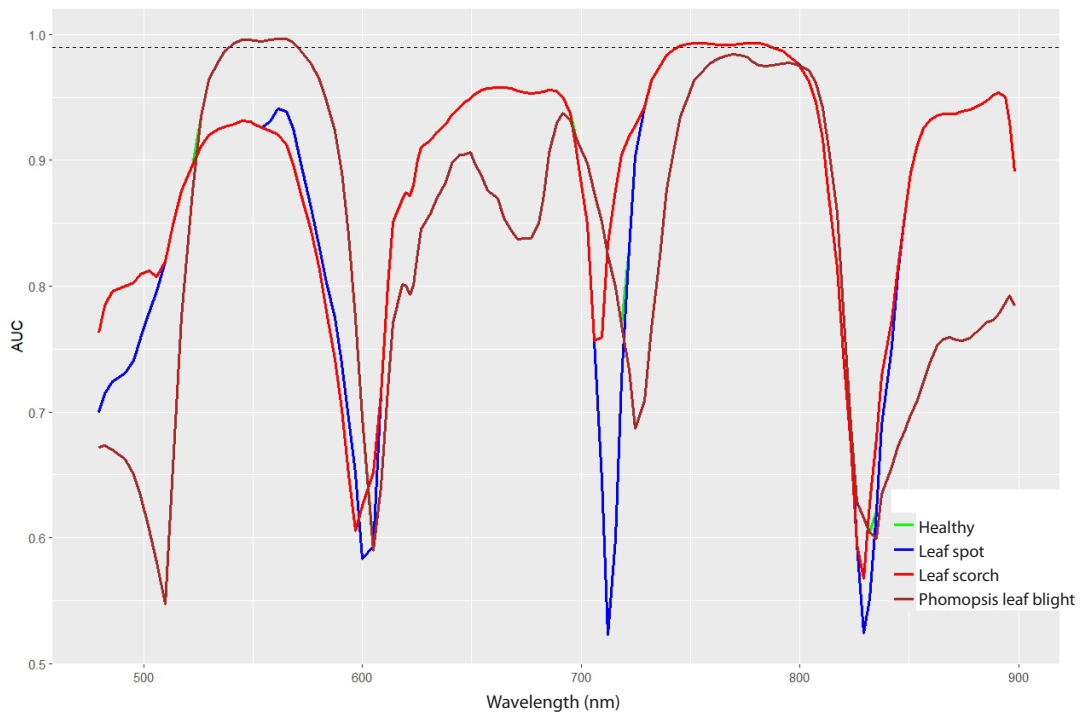
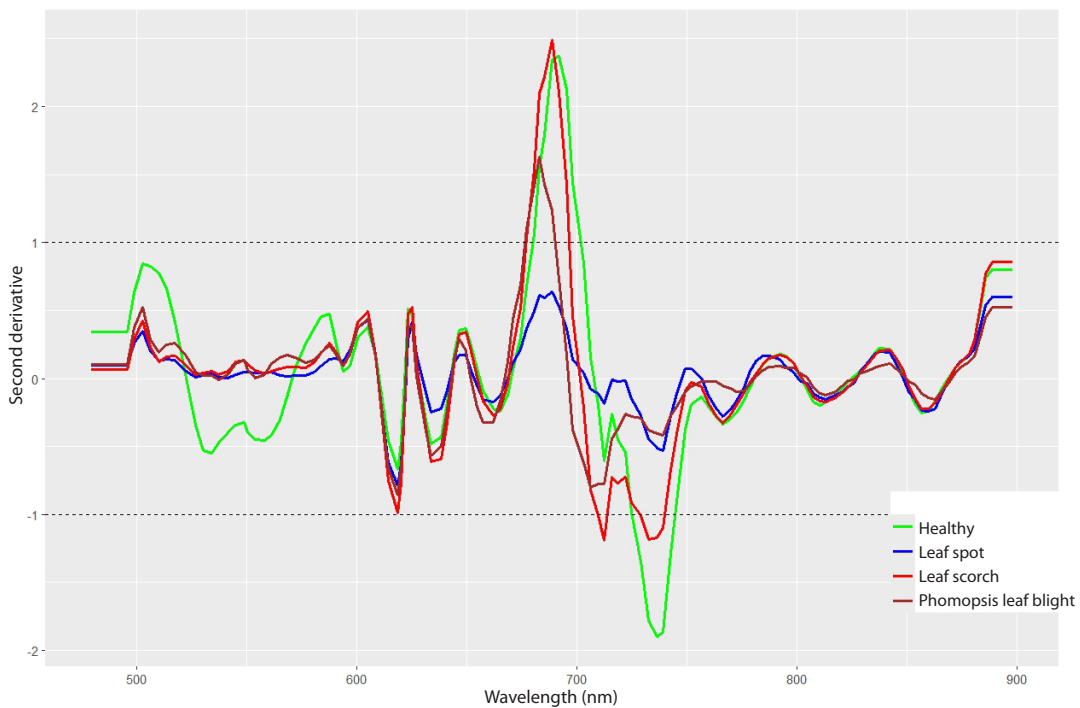


## SUPPLEMENTARY MATERIALS

to the article A.F. Cheshkova "Identification of fungal diseases in strawberry by analysis of hyperspectral images using machine learning methods"



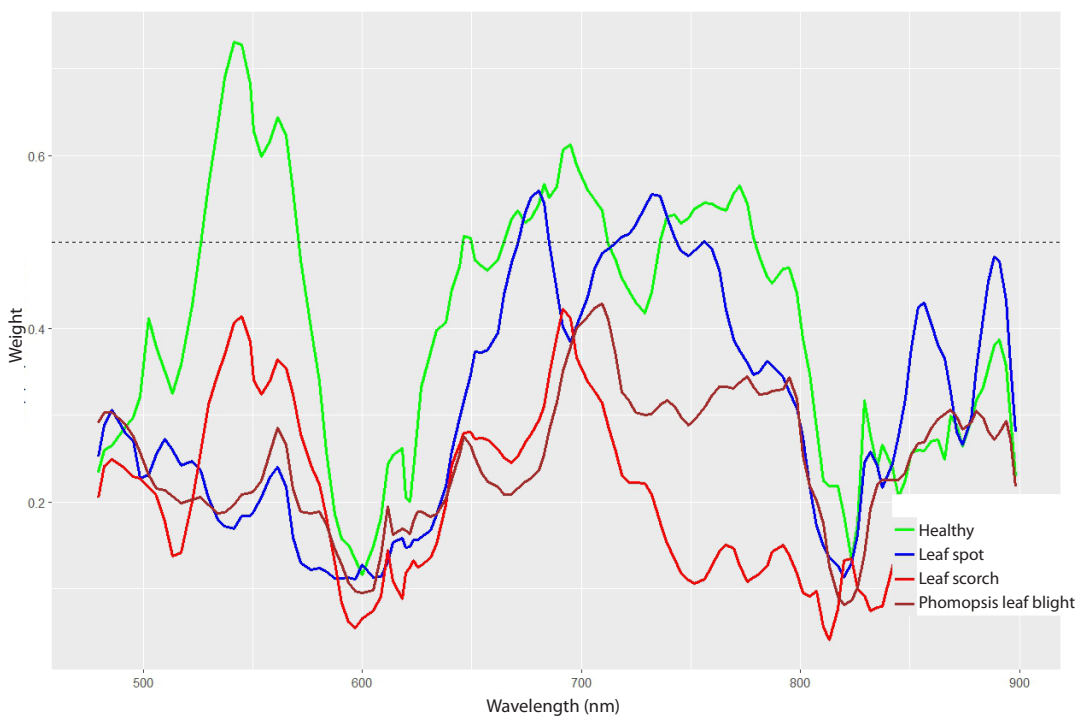
**Fig. S1.** Area under curve (AUC) values calculated by the spectral data of strawberry leaves reflectance for each wavelength for different diseases.



**Fig. S2.** Second derivative values calculated by the spectral data of strawberry leaves reflectance for each wavelength for different diseases.



**Fig. S3.** Regression coefficient values of the PLS-DA method calculated by the spectral data of strawberry leaves reflectance for each wavelength for different diseases.



**Fig. S4.** The weights obtained by the Relief algorithm calculated by the spectral data of strawberry leaves reflectance for each wavelength for different diseases.